

Historic, archived document

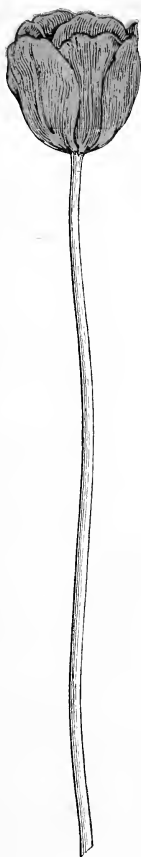
Do not assume content reflects current scientific knowledge, policies, or practices.

62,73

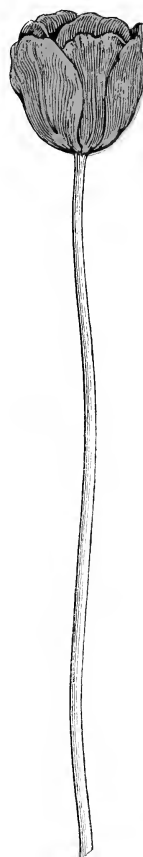
1923

LIBRARY
RECEIVED
★ JUL 12 1923 ★
U. S. Department of Agriculture.

Eddy & DeWilde



The New Way
"The Sure Way
To Buy
Your Bulbs





The women of Holland have quite as much to do with growing bulbs as the men. Its their fussiness, their particularity that counts so.

Why Its The Sure Way

HOLLAND, dyke-bounded Holland, how it instantly makes you think of wooden shoes, windmills and bulbs. Yes, and extreme cleanliness and a painstaking methodicalness, that defies all other nations. Because of such traits, quite as much as climate and soil, the Hollanders grow the finest bulbs the world produces.

But, of course, some are better than others, and quite like eggs, vary in size and quality. To make sure of only top notch quality, Mr. De Wreede, a native Hollander, stays in Holland and personally buys and superintends the packing of every bulb we sell.

As a further insurement to you, your order will be packed in a separate package *over there in*

Holland, and will come to you in that very same original Holland package.

Its the only way we know of to surely make sure, of least possible chance of mixing of varieties, so frequent an occurrence when the bulbs are repacked over here. As an extra precaution against all possibility of the bulbs heating on board the steamer, and injuring the bloom which is in the heart of every bulb, we pack them in buckwheat hulls.

Every bulb we send you is absolutely top notch quality. That's why they are a bit higher in price than some. We guarantee without reservation, that every bulb will flower and be true to name. Any discontents will be settled promptly and happily.

Eddy & De Wreede

Importers - Distributors

Paradise, Lancaster Co., Pa.

How To Have Five Weeks of Bulb Blooms

ITS ALL nonsense, what some folks say about the bulb bloom season being so short. Its short, if you don't select your kinds and varieties knowingly.

To save you that bother, we asked one of the country's experts to make up for us, a collection that will give an uninterrupted succession of bloom joy for at least 5 weeks. It starts with the Snowdrops and ends with Darwin Tulips. It contains 6 kinds, 13 varieties, 258 bulbs in all and costs \$12.

"Succession" Collection of Bulbs No. 1 258 Bulbs in all for \$12.

Especially selected to give your garden the glory
of *continuous bloom* from April to June.

No.	Kind of Flower	Variety
50	Snowdrops	Mixed single and double
50	Grape Hyacinths	Heavenly Blue
50	Crocus	Mixed
20	Hyacinths	12 King of the Blues 12 L 'Innocence (Pure white)
48	Narcissi	12 Double early—VonSion 12 Medium Trumpet—Sir Watkin 12 Giant Trumpet—Emperor 12 Poet's 6 Ornatus 6 Poeticus (very late)
40	Tulips	12 Single Early—Keiskerkroon 12 Cottage—Inglescombe Pink 12 Darwin—Rev. Ewbank (lilac) 12 Dutch Breeder—Bronze Queen (very late)

"Succession" Collection of Tulips No. 2 84 Bulbs in all for \$5.

12 Single Early Keiskerkroon	12 Darwin — Rev. Ewbank (lilac).
12 Single Early Yellow Prince.	12 Darwin — Clara Butt (pink).
12 Single Late — Maiden's Blush.	12 Dutch Breeder — Bronze Queen (very late).
12 Cottage — Inglescombe Pink.	

Holland Grows No Finer Bulbs Than These

EVER noticed how pretty much every seller of bulbs describes their's as "choice," "extra fine," "top notch" and so on?

Apparently everybody is selling the best. If that be so, wonder what Holland does with all their second and third best?

Evidently some of them do reach this country, as a comparison of prices would rather plainly indicate. Therefore, right at the start let us establish the fact that we have nothing to do with so-called bargain bulbs—those which of necessity must be inferior.

Ours are all top notch quality. Mr. De Wreede is right on the ground in Holland, buying every bulb we sell. He buys them. He sees they are packed right. That's why we can guarantee every bulb has a flower in its heart, and that it will bloom true to name.

HYACINTHS

First Size - 16 CM

Choice selected Hyacinths for Bed, Borders or Indoor Planting. Took 3 years to develop these bulbs. Weight 2 lbs. per dozen.

Special Collection No. 10

Mixed varieties as listed below:

50\$5 100\$9

For Your Own Selection

		Each Doz.	100
Red—King of the Belgians	.15	\$1.50	\$11.
Light Pink—Grandeur a Merveille	.15	1.50	11.
White—L'Innocence	.15	1.50	11.
Light Blue—Queen of the Blues	.15	1.50	11.
Porcelain Blue—Czar Peter	.15	1.50	11.
Dark Blue—King of the Blues	.15	1.50	11.
Dark Blue—Charles Dickens	.15	1.50	11.
Porcelain Blue—Captain Boyton	.15	1.50	11.
Yellow—King of the Yellows	.15	1.50	11.

Hyacinth Specials

"Exhibition or Top-Root"

Size 19 to 20 Cm. Flower in April. The very finest product of Holland's Bulb Farms.

For growing in the house or conservatory in glasses as well as pots and pans, and for special beauty out of doors.

Took 4 to 5 years to develop these bulbs. Weight 3 lbs. per doz.

	Each	Doz.	100
Red—King of Belgians30	\$3.25	\$25.
Light Pink—Grandeur a Merveille30	3.25	25.
White—L'Innocence30	3.25	25.
Light Blue—Queen of the Blues30	3.25	25.
Porcelain Blue—Czar Peter30	3.25	25.
Dark Blue—King of the Blues30	3.25	25.
Dark Blue—Charles Dickens30	3.25	25.
Porcelain Blue—Captain Boyton30	3.25	25.
Yellow—King of the Yellows30	3.25	25.

The above group of varieties carefully selected from very extensive list. They are deservedly classed as the best.

TULIPS - Single Early

Flower in April. Average 11 to 12 Cm. Sure Flowering. Best selection of varieties. 7 lbs. per 100. Grown 2 and 3 years.

SPECIAL COLLECTION No. 11

Choice Mixed Single Early Tulips, \$4. per 100

FOR YOUR OWN SELECTION

	Doz.	100
White—La Reine, A, 1185	\$6.
Yellow—Yellow Prince, A, 11, X75	5.50
Red and White; Standard Silver B, 1190	7.
White and Red-Striped; Joost van Vondel*, A, 1275	7.
White—Joost van Vondel*, A, 12, X90	7.
Pink and White—La Precieuse, Cottage Maid, A, 9, X90	6.50
Pink—Rose Grisdelin B, 1185	6.
Pink Rosamundi Huikman, B, 11,85	6.
Pink—Rose Luisante, A, 10, X	1.25	9.
Yellow—Chrysolora75	5.50
Yellow—Kanarievogel75	5.50
Dark Violet—Wouwerman85	6.
White—L'Immaculee85	6.
Red and Yellow—Duches de Parma*, Keizerkroon or Lord Kitchener*, B, 14, X85	6.
Terra Cotta—Thomas Moore*, B, 1475	5.50
Yellow—Ophir d'Or, A, 1275	5.50

TULIPS - Double Early

Later Flowering than Singles. Flower in late
April. 11 Cm. 7 lbs. per 100. 2 and 3 years.

Special Collection No. 12

Choice Mixed Double Early Tulips, \$4 per 100

For Your Own Selection

	Doz.	100
White with Pink Tints on Developing		
Flower—Murillo*, 1075	\$5.50
Pink—Salvator Rosa*, 1090	7.
White—Rose Blanche, 1075	5.50
Red—Imperator Rubrorum*, 12, X...	1.10	8.50
Light Pink—Couronne des Roses*, 11.	.90	6.50
Orange Yellow—Couronne d'Or, 12...	.90	6.50
Red, Rubra Maxima, 1190	6.50
Red and Yellow—Tournesol*, 11	1.00	7.50
Yellow—Tournesol*, 11	1.00	7.50
Red and Orange—El Toreador*, 11		
(New)	1.25	9.

TULIPS - Parrot

*Dragon or Monstrosa Type.
Flower in May. Fantastic
and exceedingly interesting
petal forms. Bedding
Tulips.*

For Your Own Selection

	Doz.	100
Red—Cramoisi brilliant75	\$5.
Yellow—Lutea Major75	5.
Red and Yellow—Perfecta with green- ish edge75	5.
Red and Yellow—Mark-graaf varie- gated75	5.

TULIPS - Single Late

*Flower in May even in June.
(Cottage Garden Tulips).
Fine for clumps in perennial
borders and in formal beds.*

SPECIAL COLLECTION No. 14

Choice Mixed Single Late Flowering Tulips.
\$4. per 100

FOR YOUR OWN SELECTION

White with Pink Edge—Picotee or		
Maiden's Blush75	\$5.
Golden Yellow-Bouton d'Or or Ida65	4.50
Red—Gesneriana Spathulata Major65	4.50

For cutting this class is even better than early Tulips. Last longer when cut.

TULIPS - Darwin

A wonderful late May flowering type. You surely should have; stems 20-24 inches.

SPECIAL COLLECTION No. 15

\$4. per 100

ASSORTED COLORED VARIETIES

Assorted White	\$5.	per 100
Assorted Pink	\$5.	per 100
Assorted Red	\$5.	per 100
Assorted Lilac	\$5.	per 100

FOR YOUR OWN SELECTION

	Doz.	100
Louise De La Valliere—Rosy pink .. \$1.	\$24.	
Centenaire—Deep rose, flushed claret	1.50	9.
Le Notre—Rose shaded blush	2.00	12.
William Pitt—Deep Scarlet	2.00	12.
Euterpe—Rosy Lilac	1.50	9.
Reverend Ewbank—Lilac	1.00	6.
La Tulipe Noire—The black Tulip	1.00	6.
Clara Butt—Pink85	6.
La Candeur—White85	6.
Farncombe Sanders—Scarlet	1.00	8.50
Gretchen or Margaret—Flesh pink85	6.
Bartigon—Fiery Red	1.25	9.
Madame Krelage—Silvery Rose90	6.50
Pride of Harlem—Red85	6.
Yellow—Inglescombe75	6.

Last, really a Cottage Tulip but popularly known as the Yellow Darwin. No existing True Darwins of yellow color.

TULIPS - Dutch Breeder

Art Shaded Sorts.	Doz.	100
Godet Parfait—Deep purple violet ..	\$1.50	\$9.
Dom Pedro—Brown shaded maroon and rich mahogany	2.40	15.
Indian Chief—Black Chief—Dark purple black	12.	85.
Feu Ardent—Brilliant red, mahogany shading	1.25	9.
Fairy—Panorama—Reddish mahogany with shading	2.50	20.
Bronze Queen—Soft buff, inside gold- bronze	1.00	7.50
Cardinal Manning. Kings-court—Dull wine-red90	6.50
Chestnut—La Nuit—Dark brown90	7.
Yellow Perfection. Old Gold. Light yellow margined gold90	7.
Lord Curzon. White margined crim- son	1.00	7.40
Sunset. Prince of Orange. Bronze Yellow	1.00	7.40
Medea. Crushed Strawberry. Yellow center85	6.
Superb Mixture of this class of Tulips	.75	5.40

CROCUS - Mammoth Size

*Flowers in March. First of
the blubs to bloom. Crocus
(Mammoth) 3 lbs. per 100.*

	Doz.	100	1000
Mammoth Yellow25	\$1.75	\$15.
Variegated25	1.75	15.
White25	1.75	15.
Blue25	1.75	15.
Mixed Crocus—All Colors20	1.25	10.

Daffodil or Narcissus - Double Hardy

*Here is sunshine for you.
Drifts of golden happiness-
m a k i n g, sunshine-filled
flowers.*

	Doz.	100
Golden Yellow—Von Sion (The re- nowned old double yellow Daffodil)	1.20	\$9.
White with orange tints in center— Orange Phoenix (Eggs and Bacon)	.90	7.
White with light sulphur tints in cen- ter—Sulphur Phonenix (Codlins and and Cream)90	7.

Daffodil or Narcissus - Single Hardy

Flowers in March and April. Don't stint yourself on these poetic, joy kissed flowers. Weight 2 lbs. per doz. 12 lbs. per 100.

	Doz.	100
Bicolor Grandee—White with yellow Trumpet	1.	\$8.
Golden Yellow—Golden Spur*	1.25	8.50
White with Orange Centre (Poet's Narcissus) Poeticus Ornatus50	4.
Large Yellow Trumpet, with sulphur yellow petals, Emperor*	1.10	8.50
Large Golden Yellow Trumpet, white petals Empress*	1.10	8.50
Sulphur Petals, with medium golden cup, Sir Watkins	1.	8.
Golden Yellow—Maximus85	6.
Bicolor John Horsfield	1.	8.
Moschatus Albicans	1.	8.
Yellow—King Alfred; Finest Yellow Daffodil, (single)	Each .60	6. 48.

POLYANTHUS

OR CLUSTER FLOWERING NARCISSUS

With April showers these lovely noddling flowerfilled heads bring their boundless cheer.

SPECIAL COLLECTION No. 16

Choice Mixed Narcissus,.... \$5. per 100

FOR YOUR OWN SELECTION

	Doz.	100
White with light yellow centre Grand Monarque	\$1.10	\$7.50
White with dark buttercup yellow center—Gloriosa90	7.
Yellow with orange cup — Grand Soleil d'Or.	1.90	12.

"In the North the above group should be used exclusively for pot culture in the house, and for forcing in the greenhouse; but south of the frost line they are prized for bedding and naturalizing."

Paper White Narcissus

Very easy to grow—in soil fibre, or in pebbles and water in a bowl. Give abundant returns in dainty snow white blossoms.

	Doz.	100
Paper White Grandiflora	\$1.25	\$9.

JONQUILS

The Fragrant Out-of-Door Sort

The fragrant out-of-doors sort. They are sort of junior narcissus having all their loveliness on a smaller scale. These we offer are the latest improved varieties.

	Doz.	100
Rugulosis—Rich Yellow Improved70 \$5.
Campernelle—Deep Yellowblooms70 5.

SEVEN FINE OLD FRIENDS

From Which The Embargo Has Been Lifted

Friends on which, until recently, there have been embargoes from coming into this country. For 3 years the embargo has been lifted. So buy freely, and make sure you have all you need.

SNOW DROPS - Galanthus

Thrive in any soil or situation. Their lovely drooping bells are beloved by all who know them.

	25	100	1000
Single	\$1.25	\$4. \$35.
Double	1.50	5. 45.

SCILLA CAMPANULATA

Wood Hyacinths

Charming colorful effects when planted in masses. On the heels of the Tulips they come, admirably suited for planting among the shrubbery, rock garden, beds and borders, and among the tulips.

	25	100	1000
Blue	\$1.25	\$4. \$35.
White	1.25	4. 35...
Pink	1.50	5. 45.

SCILLA SIBIRICA

Blue Squill

Delightful little star-like flowers, filled and running over, with an intense brilliant blue. Plant in clumps of dozen or more. Increase rapidly.

	25	100	1000
First size	\$1.50	\$5.50 \$50.
Second size	..	1.35	4.50 40.

GRAPE HYACINTHS

A heavenly sky blue grapelike clusters, set closely to the 5 inch stalk. Good for shady or exposed spots. Ideal for rockeries. Needs no care.

	25	100	1000
Extra size	..	\$1.00	\$3.50 \$30.
Second size	..	.75	2.50 20.

CHIONODOXA

Comes along with the snowdrop. Some call it the "Glory-of-the-Snow." Beautiful intense blue with white centre. Grows indoors or out equally well.

	25	100	1000
		\$1.25	\$4. \$35.

IXIAS - African Corn Lily

Brilliant, showy, wonderfully tinted, growing in full spikes. Fine for house culture. Not hardy north of Washington.

	25	100	1000
		\$1.00	\$3.50 \$30.

ERANTHUS HYEMALIS

Winter Aconite

Lustrous yellow blossom. Lovely in masses. Especially attractive on rock gardens. Hardy.

	25	100	1000
		\$.75	\$3. \$25.

ORDER SHEET

For The New Way - The Sure Way
To Buy Bulbs

.....1923

Eddy & De Wreede
Flower Bulb Specialists
Paradise, which is in
Lancaster Co., Pa.

Kindly enter my order for the items
shown on the pages that follow.

Enclosed is check
 money order for \$.....
covering amount in full.

It is understood that the bulbs will come
to me in the original Holland packed pack-
ages, and that every bulb is guaranteed
true to name, and that every bulb will
flower.

Name.....

Address.....

.....

Order For Special

5 Weeks Bloom Collections No. 1 and No. 2

We guarantee these collections to give you
5 weeks of continuous bloom.

No.	Quantity	Cost	Total
1			
2			

How To Order Your Own Selections

Find on the table at the right, the number as shown in the catalog, of each collection you want. In the space preceding the cost of the 50 or 100 lot, write how many sets you want.

Send Me Following Collection As Described In Catalog

No.		50		100		500
10		\$5		\$9		\$40
11				4		17.50
12				4		17.50
14				4		17.50
15				4		17.50
16				5		20.

TERMS

5% discount on prices quoted in catalog, when cash accompanies orders. When advantage is not taken of this cash discount, one-fourth cash invited with order, balance C. O. D. Where credit is desired, please furnish banking references.

Tulips - Narcissus - Hyacinths - etc.

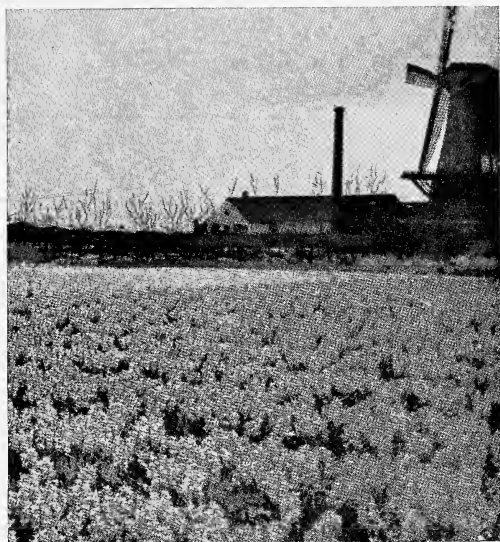
This page and over the leaf, use for ordering bulbs of your own selection made from the catalog listings.

[illegible]

DELIVERY

Total \$_____

We prepay delivery charges on all orders within the 3rd zone from New York. Beyond the 3rd zone from New York, and east of the Mississippi, add 5% of value of order; west of the Mississippi, add 10%.



Here, in Holland, right where the bulbs grow, is where your order will be *separately packed*. To you they will come in that same Holland packed package.

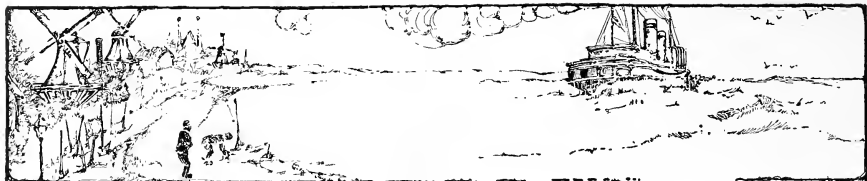
A Guarantee That Actually Guarantees

I SN'T it so, that guarantees mostly don't guarantee? Or if they do, then getting satisfaction is more of a brother than its worth.

When a thing's wrong with you, its wrong, and you don't care about going on the witness stand and being questioned. That's why we make our guarantee a plain statement, without any loop holes.

We guarantee that every bulb has a flower in its heart. We further guarantee that it will flower, and that the flower will be true to name. Furthermore, if any of our bulbs fail, we will cheerfully and without any long correspondence, make good. We want you satisfied.

We will do our part to see that you are.



Time Limit For Fall Delivery

July fifteenth is the last day on which we can receive your order for the prices named in this catalog. On the twenty-fifth day of July our complete order must go to Mr. DeWreede over in Holland, in order to make sure of securing for you the top notch quality you want, and the varieties you have selected.

So, don't put off ordering, or first thing you know the middle of July will be here and it will be too late.

How To Order

Use the order sheet enclosed with the catalog. On the special collection, order by number—no need to describe it. For the other items of your own selections, write out the varieties and quantities.

Terms

5% discount on prices quoted, when cash accompanies orders. When advantage is not taken of this cash discount, one-fourth cash invited with order, balance C. O. D. Where credit is desired, please furnish banking references.

Eddy & De Wreede

*Bulb Farms
Sassenheim
Holland*

*Flower Bulb Specialists
Paradise, Pa.
Lancaster Co.*

*New York
Address
23 W. 43 St.*